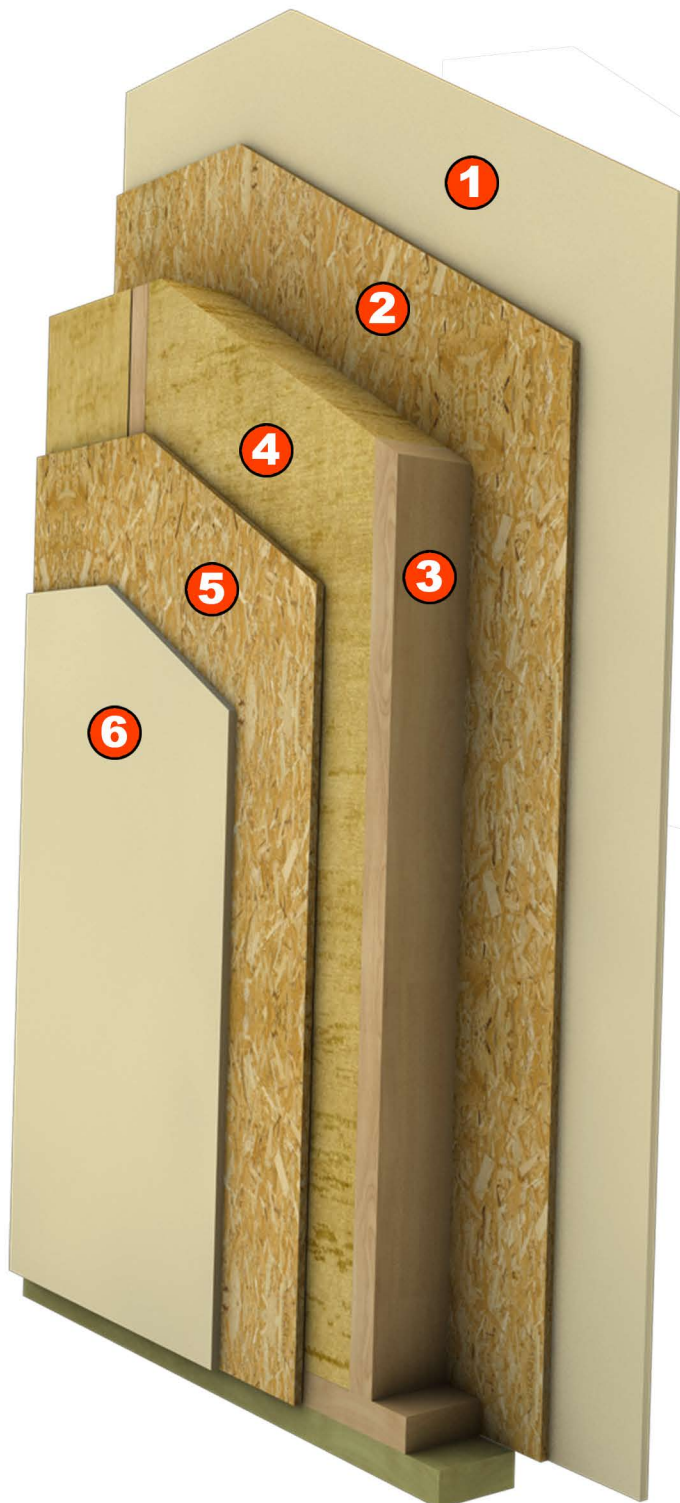


Inside wall - Solido 122

This extremely resistant inside wall is designed to carry load, an inter-axe of 400 mm and a cross section of 120x45 make it an ideal product for building.

Solido 122 has a 40 mm services cavity for an easier installation of tubes for sanitary and electricity supplies. This version can have 2 layers of gypsum board for a better sound reduction.



- 1 - Gypsum board *
 - 2 - OSB board 12.0 mm
 - 3 - Wood structure 120 x 45 treated
 - 4 - Mineral wool RockWool ND 120 mm
 - 5 - OSB board 12.0 mm
 - 6 - Gypsum board *
- * In bathroom and kitchen green gypsum

Technical datas

Total wall tickness wall 170 mm (+/- 2)
 Thermal transmittance R de 3.993 Wm²/K
 Thermal coefficient Uw de 0.250 Wm²/K
 Sound reduction coefficient Rw de *

* With double layer phonic gypsum board

Option: Service cavity 40 mm on 1face
 Service cavaities 40 mm on 2 faces
 Phonic gypsum board
 Fire proof gypsum board
 Other facing type Fermacell